



Discipleship Ministries Form

A New BWC Church Conference Form for More Missional Impact

Objectives

Participants understand:

1. Why the form is important
2. What is included in the form and how the information will be used
3. Suggestions for completing it

BWC Mission & Vision

To inspire & equip local faith communities to **develop disciples of Jesus Christ for the transformation of the world** so that more transformed lives transform lives.

LOVE others



Shift from Membership to Discipleship

by Phil Maynard

	Focused on Membership	Focused on Maturing Disciples
Goal	Get people to join	Get people increasing in their love of God and neighbor
Church's Role	Keep members satisfied	Foster spiritual growth
Leadership's Role	Encourage members to be involved in church activities	Encourage disciples to grow in obedience to God and service to others
Responsibility for Growth	Church assumes responsibility for motivating people in their spiritual journey	Disciples assume responsibility for their own spiritual growth as the church provides opportunities and encouragement

Discipleship
Council is
designed keep
the Annual
Conference
focused on
alignment to
Discipleship

- ▶ Functions, as necessary, on behalf of the Annual Conference in between sessions
- ▶ Ensures that Conference resources align to our vision, mission, and critical issues
- ▶ Discerns, develops, reviews, and evaluates the strategic direction of the Conference toward its vision and goals
- ▶ Coordinates and consults with the Conference Council on Finance and Administration regarding the annual budget



Discipleship Council Seeks to Measure Conference Ministry Effectiveness: “More Transformed Lives Transform Lives”

1. Progress on board goals which are essential to the BWC's mission and board's role.
2. Number of people:
 - a. Engaged and
 - b. Maturing in Wesleyan discipleship
3. Impact being made in communities in which our churches reside.

Overview of Church Profile Form 2020

New Questions

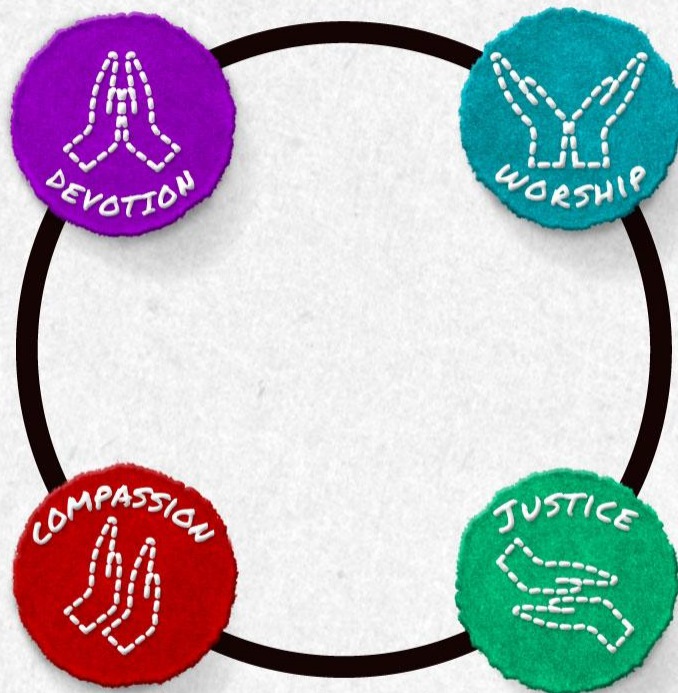
- ▶ 2020 is the first year we asked discipleship questions of churches. In 2019, some of these questions were included in the Pastor's report.
- ▶ Discipleship Council seeks to **use this data to align the work** of the Discipleship boards and Annual Conference resources so that we might better live into our vision of more transformed lives transforming lives.
- ▶ **556 churches** submitted their form (although not all of them answered all of the questions).
- ▶ Intend to **track progress year over year** to see if our activities and interventions are yielding fruit.



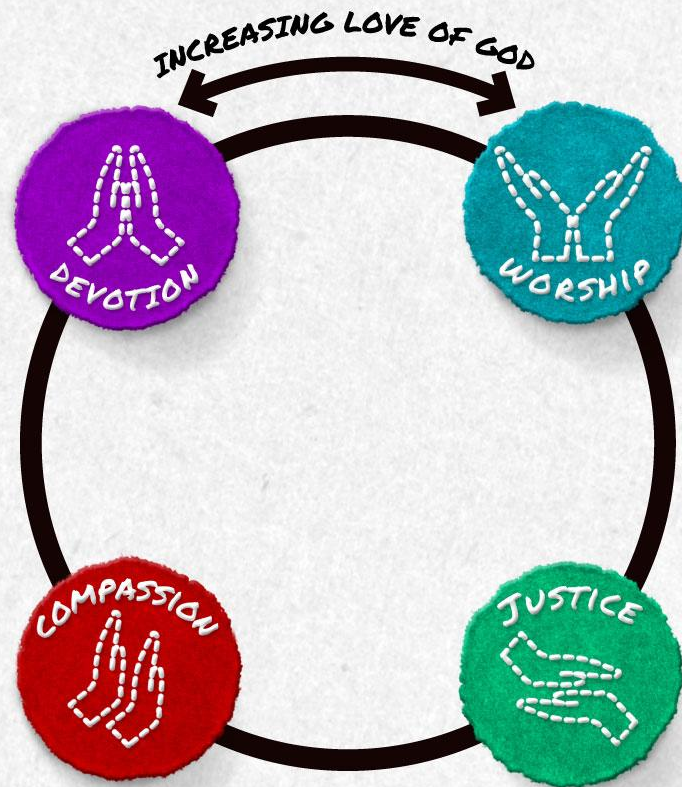


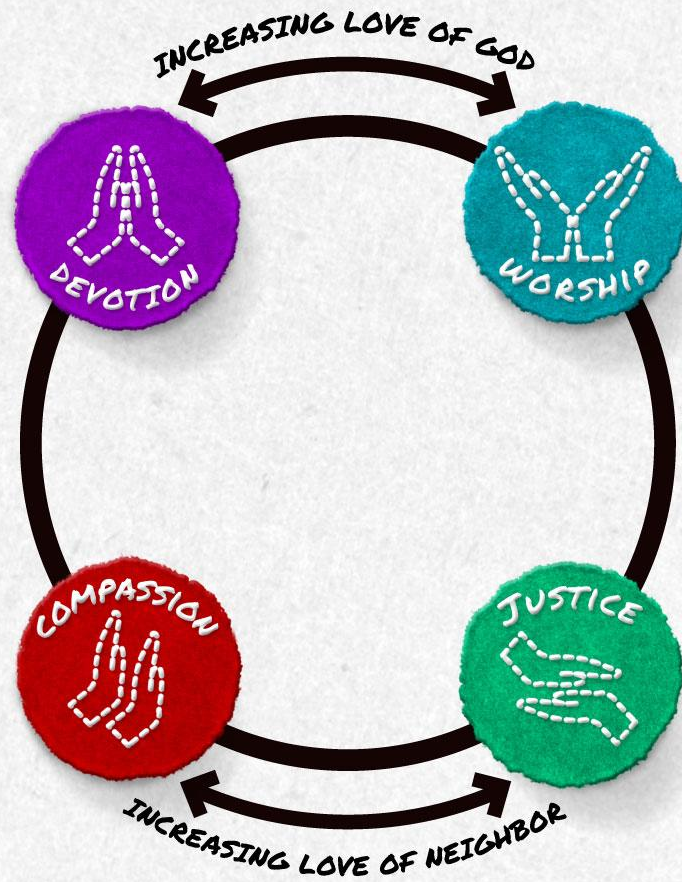
What is included in the
Discipleship Ministries
Report?

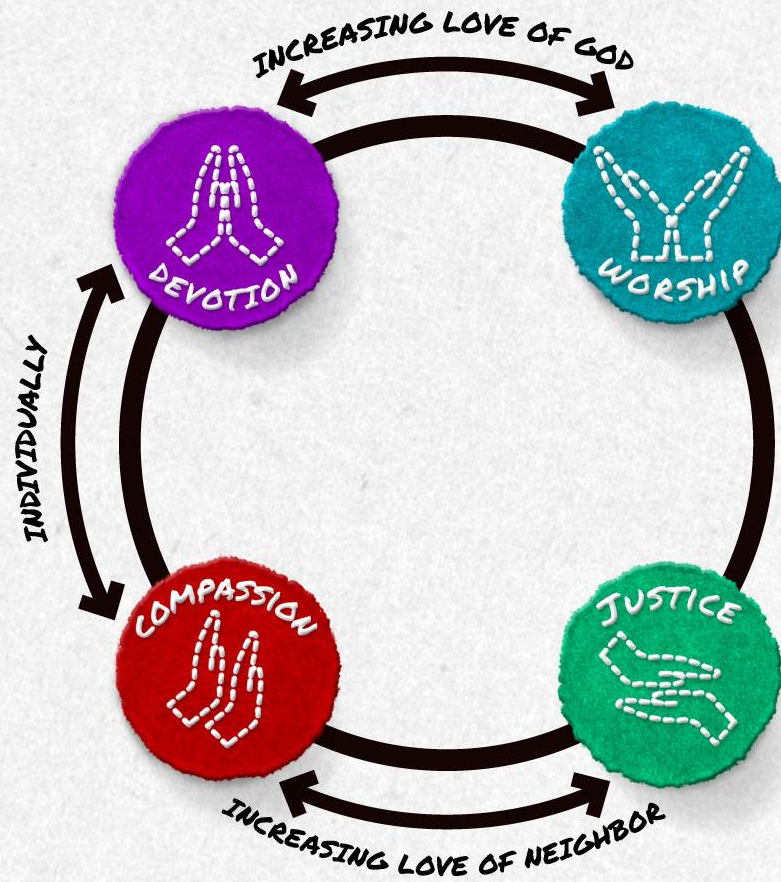
**TO WITNESS TO JESUS CHRIST IN THE WORLD AND TO FOLLOW HIS TEACHINGS
THROUGH ACTS OF COMPASSION, JUSTICE, WORSHIP, AND DEVOTION,
UNDER THE GUIDANCE OF THE HOLY SPIRIT.**

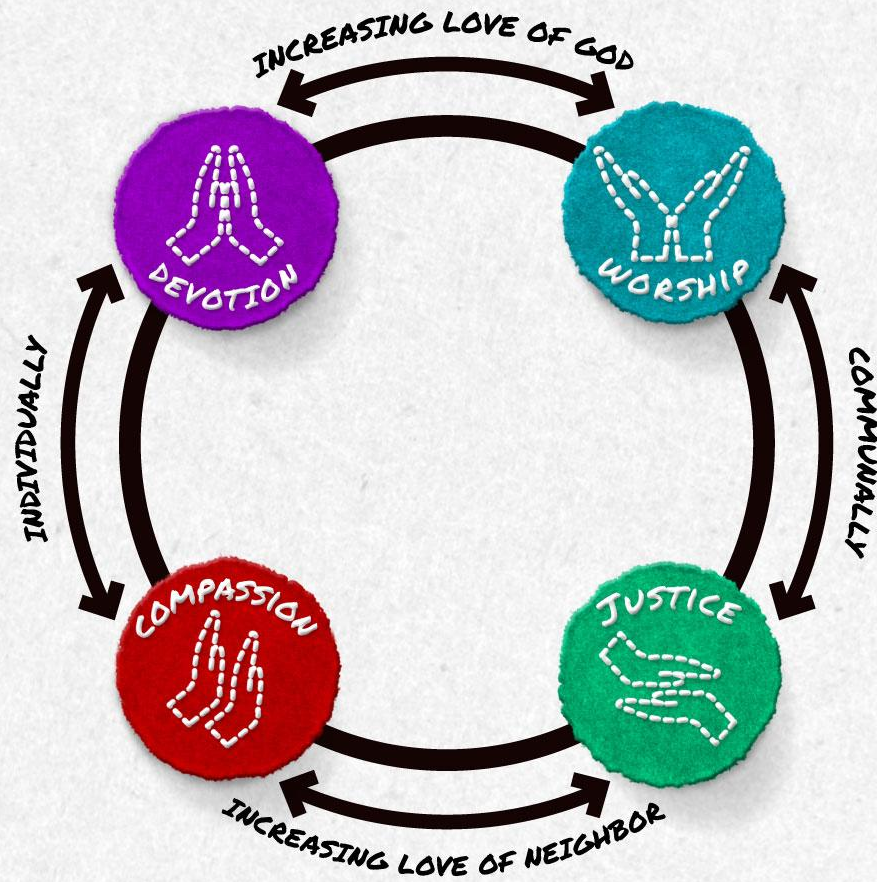


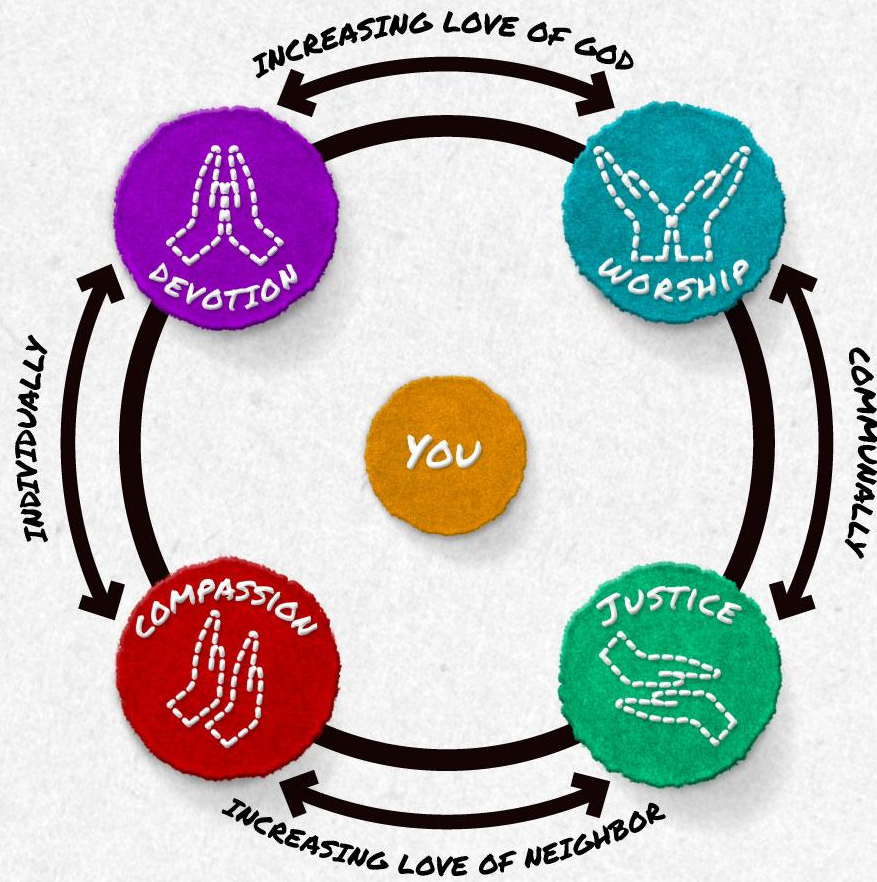
THE GENERAL RULE OF DISCIPLESHIP, ¶ 1117.2A

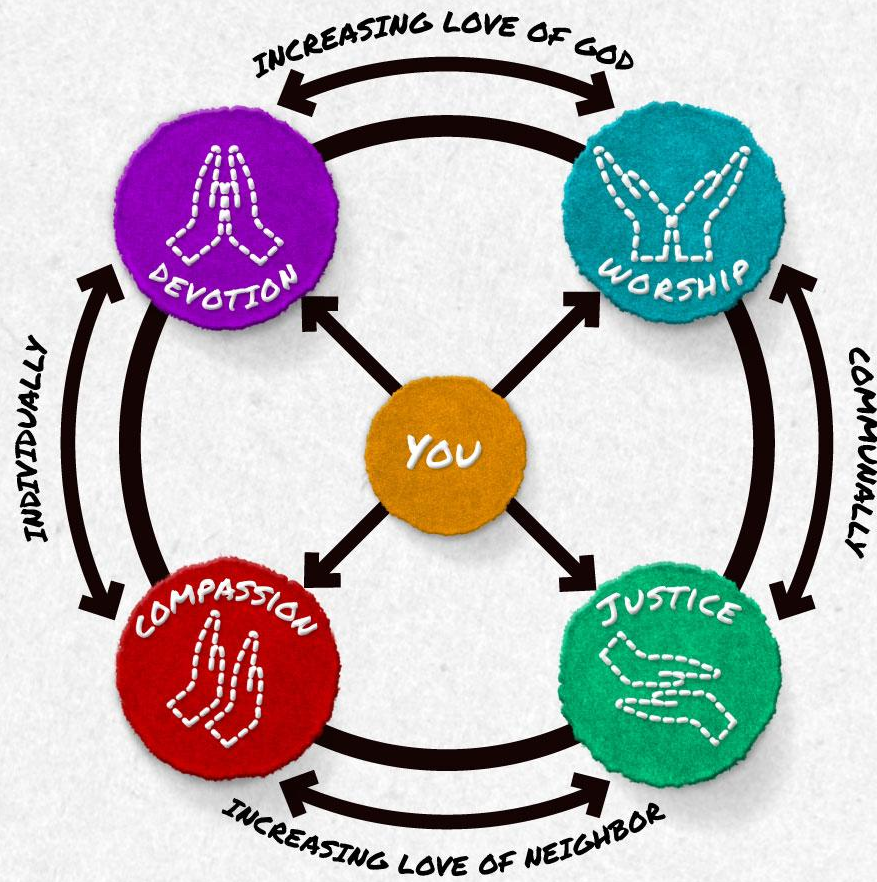






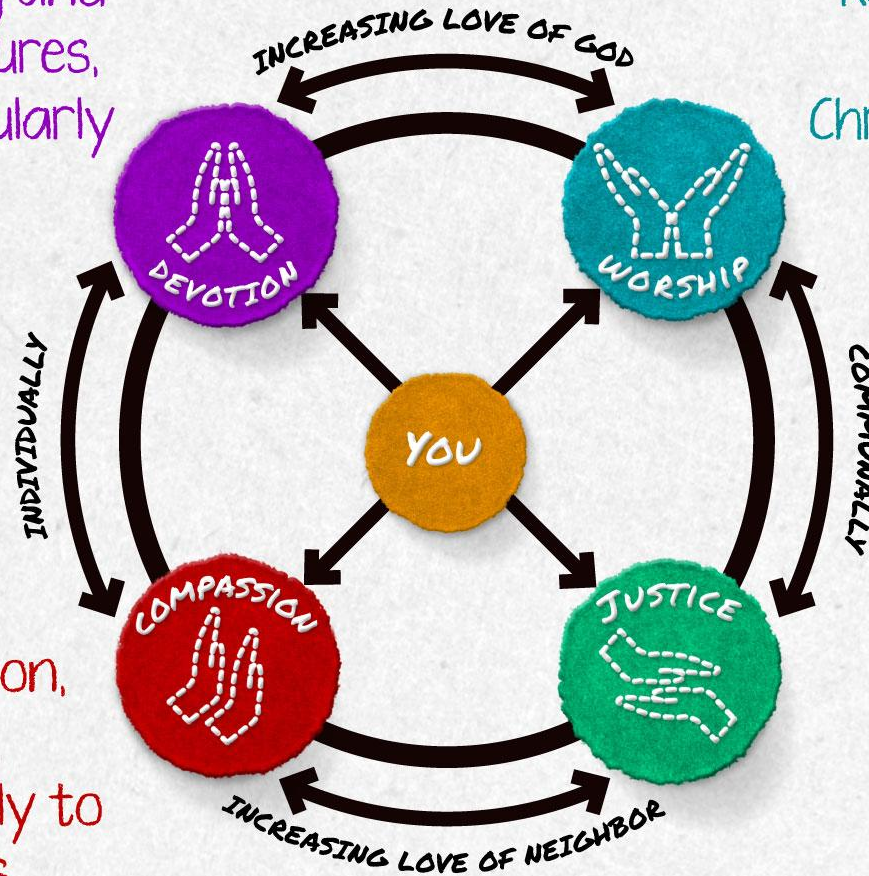






Reading, meditating and studying the scriptures, prayer, fasting, regularly attending worship, sharing our faith with others

Doing good works, visiting the sick, visiting those in prison, feeding the hungry, and giving generously to the needs of others



Regularly share in the sacraments, Christian conferencing (accountability to one another), and Bible study

Seeking justice, ending oppression and discrimination (e.g., end slavery), and addressing the needs of the poor

Rule of Discipleship: Question 1a

1. → John Wesley's Rule of Discipleship provides a holistic understanding of discipleship: "witness to Jesus Christ in the world and to follow His teachings through acts of compassion, justice, worship, and devotion under the guidance of the Holy Spirit." Rate each dimension: ¶
- a. → Members WITNESS to Jesus Christ (Witness is a public act of word and/or deed that tells others what you have personally experienced of Jesus.) [Learn more.](#) ¶
- → → ☒ Most ¶
- ☐ Many ¶
- ☐ Some ¶
- ☐ Few ¶
- ☐ None ¶
- ☐ N/A. If N/A, please explain why: Click or tap here to enter text. ¶

2020 Church Profile Form Q12a Results

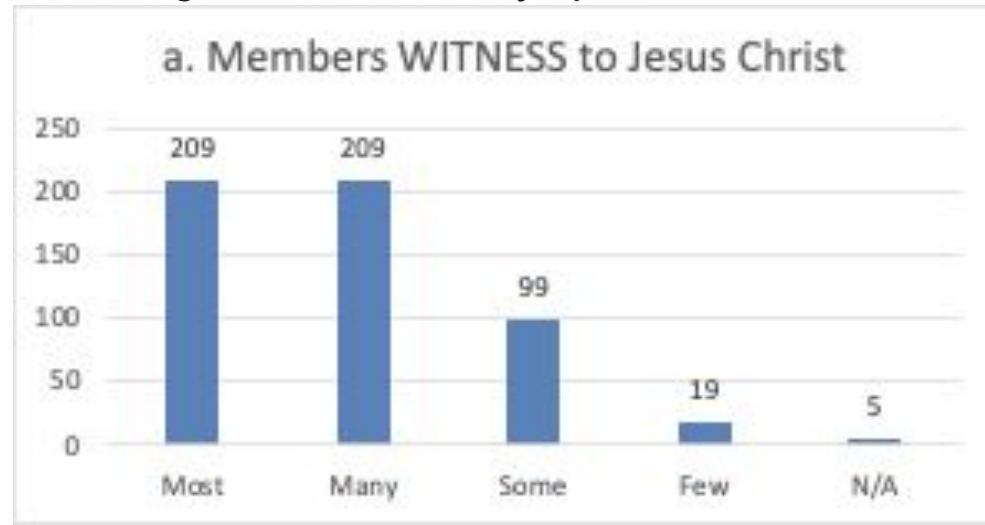
New Faith Expressions Board

12. John Wesley's Rule of Discipleship provides a holistic understanding of discipleship:
"(T)o witness to Jesus Christ in the world and to follow His teachings through acts of compassion, justice, worship, and devotion under the guidance of the Holy Spirit."
Rate each dimension:



a. → Members WITNESS to Jesus Christ:

- ☐ Most
- ☐ Many
- ☐ Some
- ☐ Few
- ☐ N/A



Rule of Discipleship: Question 1b

b. → Members follow Jesus' teachings through acts of COMPASSION (Acts of compassion are personal works of mercy. They are what is done with a person who needs help; e.g., doing good works, visiting the sick, visiting those in prison, feeding the hungry, and giving generously to the needs of others.)

☐ Most

☐ Many

☐ Some

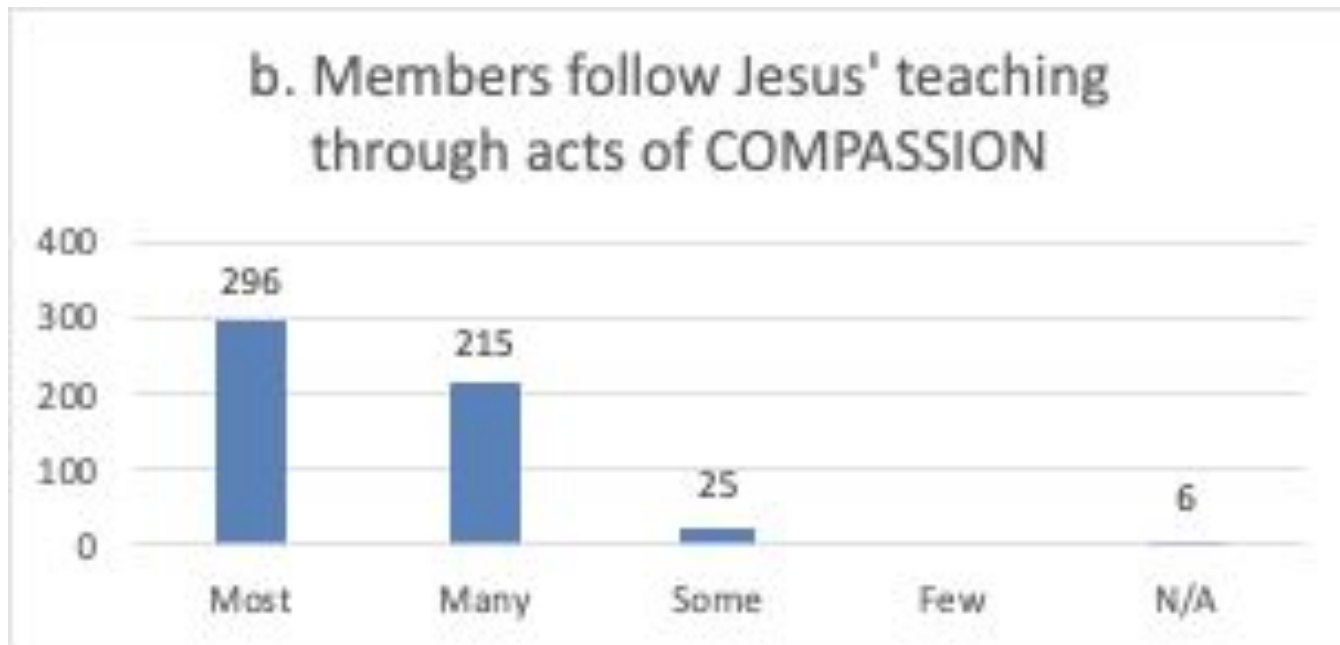
☐ Few

☐ None

☐ N/A. If N/A, please explain why: Click or tap here to enter text.

2020 Church Profile Form Q12b Results

Wellness & Missions Board



Rule of Discipleship: Question 1c

c. → The congregation follows Jesus' teachings through acts of JUSTICE (Acts of justice are communal spiritual disciplines practiced by congregations united with the other institutions working for the common good; e.g., addressing the needs of the poor, ending oppression and discrimination (for instance Wesley challenged Methodists to end slavery): ¶

☐ Often ¶

☐ More often than not ¶

☐ Sometimes ¶

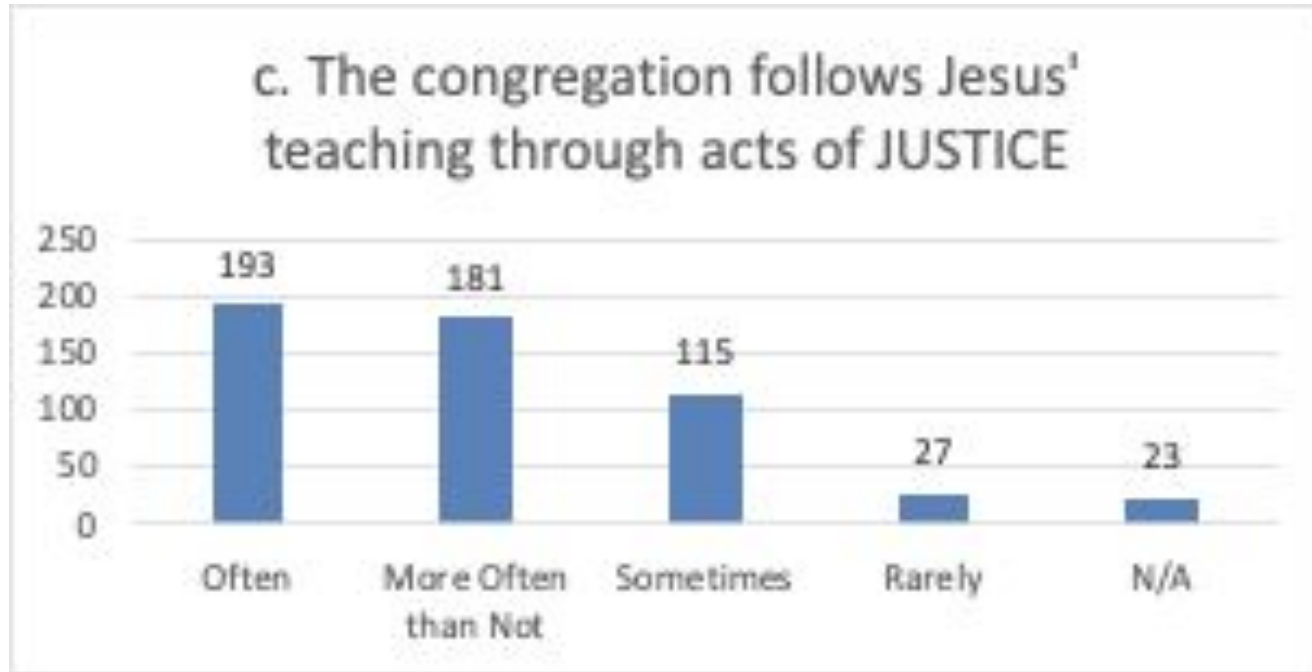
☐ Rarely ¶

☐ Never ¶

☐ N/A. If N/A, please explain why: Click or tap here to enter text. ¶

2020 Church Profile Form Q12c Results

Advocacy & Action Board



Rule of Discipleship: Question 1d

d. → The congregation follows Jesus' teachings through acts of WORSHIP (Acts of worship are the social works of piety. They are what Christians do together when they gather in Christ's name like regularly share in the sacraments, Christian conferencing (accountability to one another), and Bible study, etc.): ¶

☐ Often ¶

☐ More often than not ¶

☐ Sometimes ¶

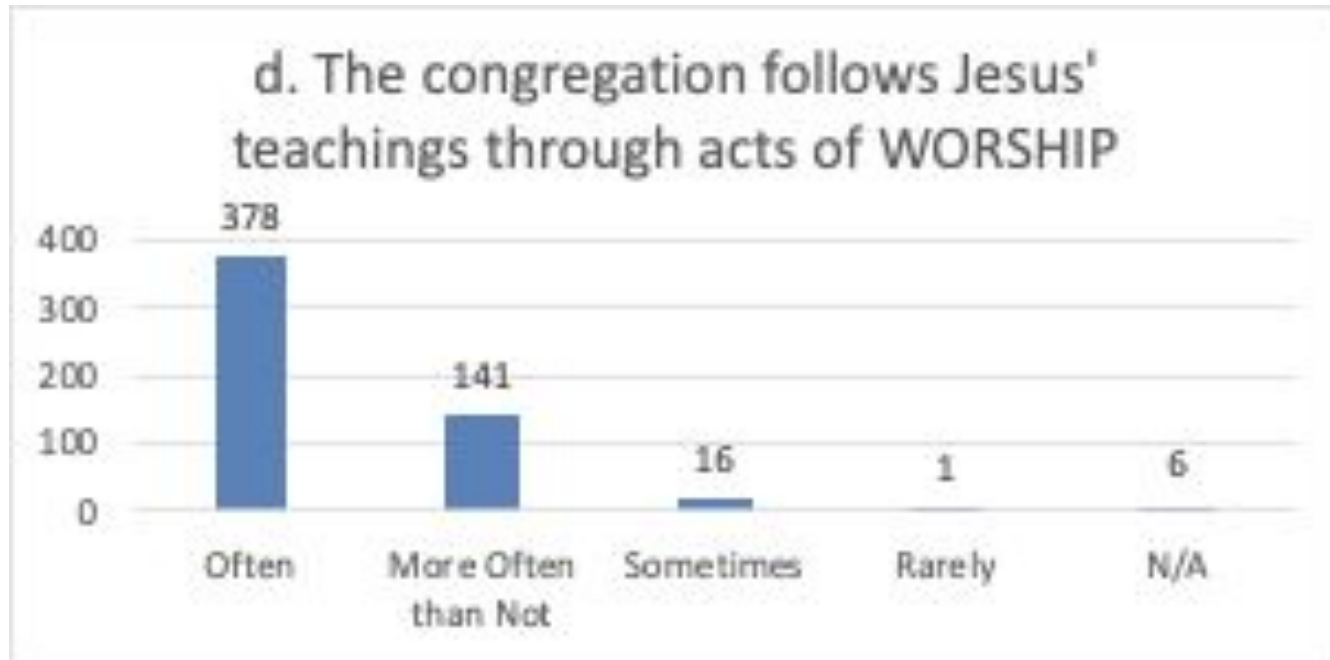
☐ Rarely ¶

☐ Never ¶

☐ N/A. If N/A, please explain why: Click or tap here to enter text. ¶

2020 Church Profile Form Q12d Results

Leader Development Board



Rule of Discipleship: Question 1e

e. → Members follow Jesus' teachings through acts of DEVOTION (Acts of devotion keep the heart open to grace that centers individuals in Christ and what He is up to in their lives. These include: reading, meditating and studying the scriptures, prayer, fasting, regularly attending worship, healthy living, and sharing our faith with others): ¶

☐ Most ¶

☐ Many ¶

☐ Some ¶

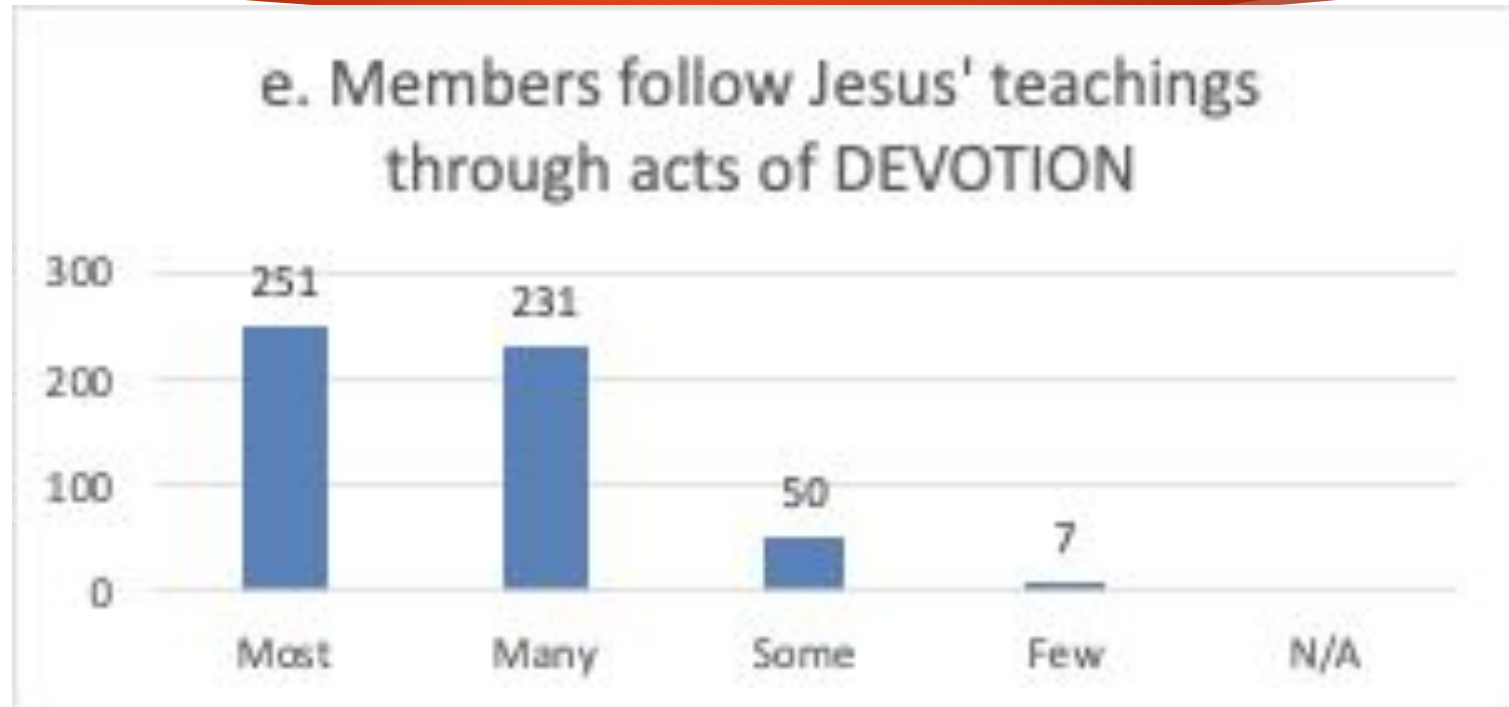
☐ Few ¶

☐ None ¶

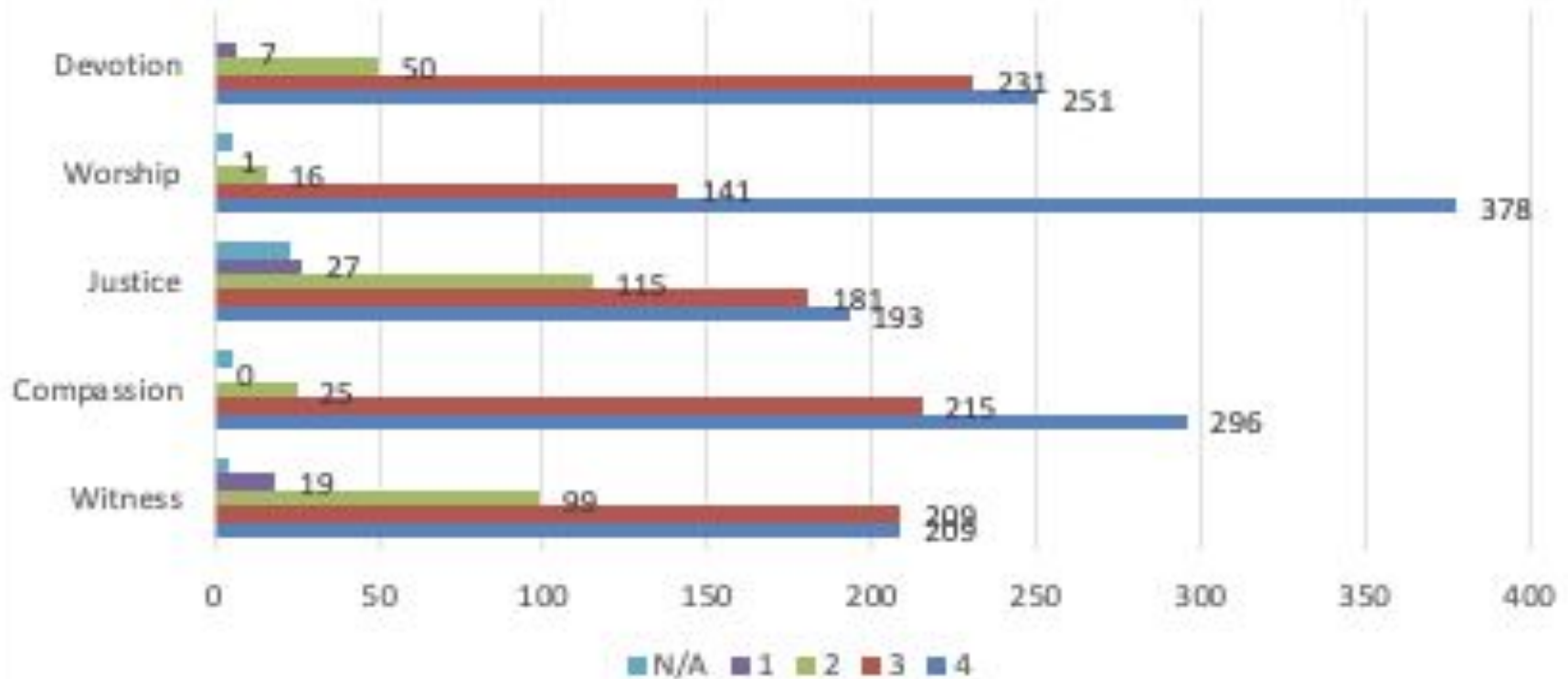
☐ N/A. If N/A, please explain why Click or tap here to enter text. ¶

2020 Church Profile Form Q12e

Leadership Development Board



When Put All Together, It Looks Like This



Intentional Discipleship Process: Question 2

2. What is the current state of the congregation's intentional discipleship process? Learn more about what an intentional discipleship system is here: <https://www.seeallthepeople.org/>

☐ The congregation could serve as a teaching congregation on how to develop and use
...an intentional discipleship system.

● → If you check this box, please describe your discipleship system.

.....Click or tap here to enter text.

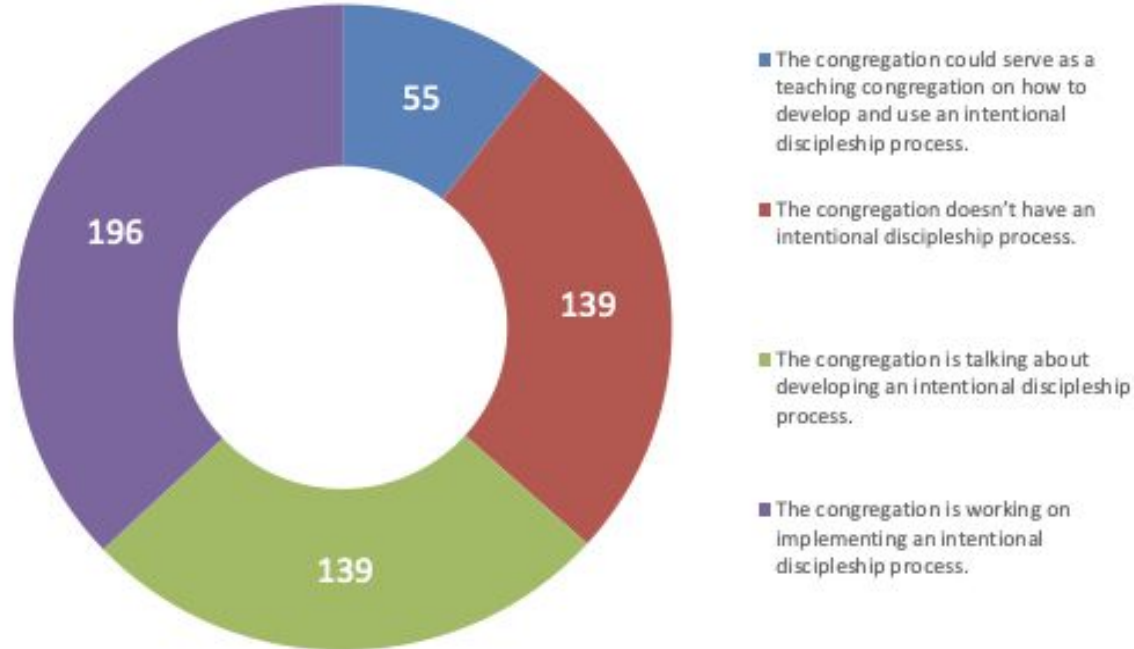
☐ The congregation is actively working on implementing an intentional discipleship
...process.

☐ The congregation is talking about developing an intentional discipleship process.

☐ The congregation doesn't have an intentional discipleship process.

2020 Church Profile Form Q13: Leadership Development Board

13. What is the current state of the congregation's intentional discipleship process?



Intentional Discipleship Systems Require Clarity About:

1. What a Disciple Is (e.g., Rule of Discipleship)
2. Characteristics of a Disciple at each Stage of Maturity
3. How the Church is Providing Opportunities and Time of Reflection for people and disciples to take their next faithful step to deepen their discipleship and grow in living and loving as Jesus
4. The many ways that people in the community who are new to the faith enter into the discipleship system



www.SeeAllThePeople.org

**What would happen if we stopped fixing
our church and started seeing all the
people Christ calls us to reach?**

A movement of United Methodists who have decided to keep our
focus on the main thing: making disciples of Jesus Christ.

Vitality: Question 3

3. Which best describes your congregation's level of vitality? (Check all that apply)

a. → We have no professions of faith for the past 3 or more years. ☐ Yes; ☐ No

b. → We are struggling to pay our bills. ☐ Yes; ☐ No

c. → We don't have the energy to maintain ministry. ☐ Yes; ☐ No

i. → If you have checked any of the above, please share how you have sought to address this. [Click or tap here to enter text.](#)

d. → We are in decline and have tried many things but none of them have worked. ☐ Yes; ☐ No

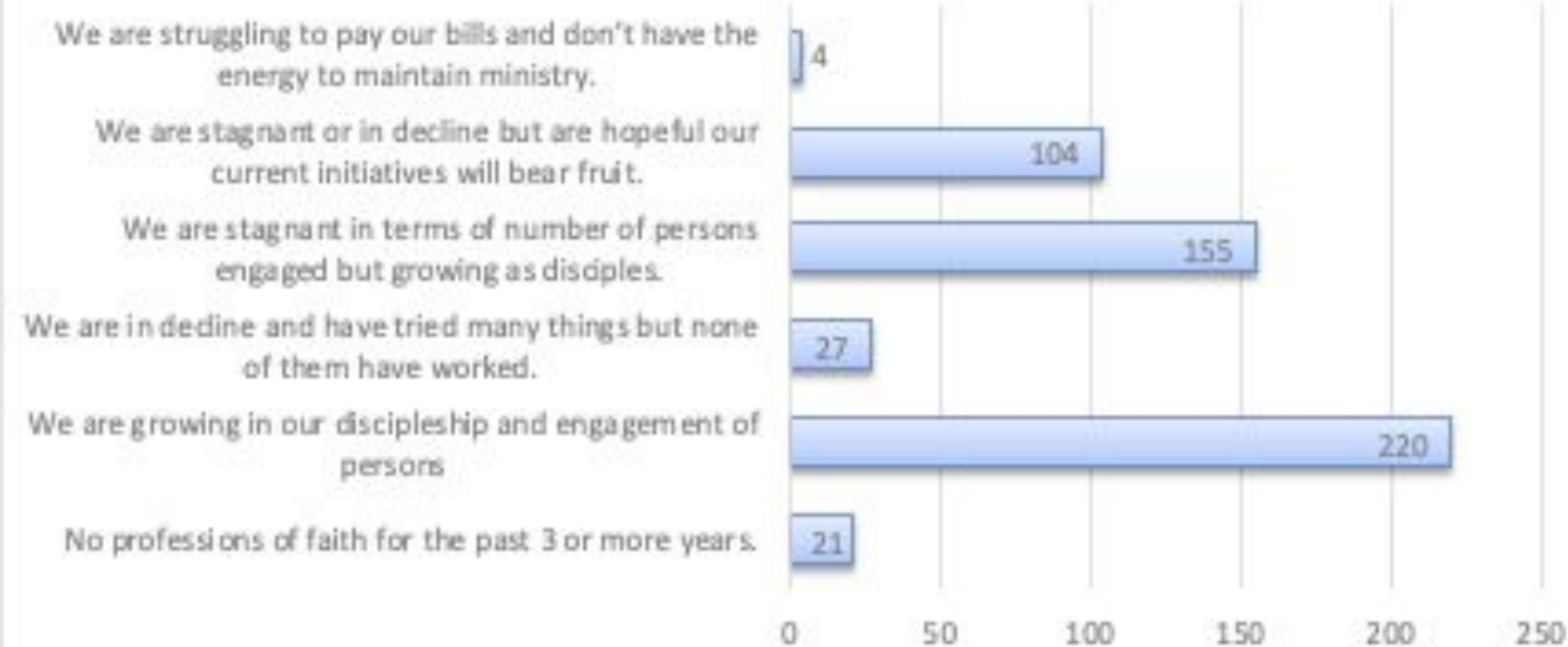
e. → We are stagnant or in decline but are hopeful our current initiatives will bear fruit. ☐ Yes; ☐ No

f. → We are stagnant in terms of the number of persons who are engaged. ☐ Yes; ☐ No

g. → We are growing in our discipleship. ☐ Yes; ☐ No

h. → We are growing in the number of persons who are engaged ☐ Yes; ☐ No

Which Best Describes Your Level of Vitality



Racial Justice: Question 4

- All Are Welcome, Beloved, Equal and Worthy ¶

Since its inclusion in the UMC Constitution in 1968, “The United Methodist Church proclaims the value of each person as a unique child of God and **commits itself to the healing and wholeness of all persons**. The United Methodist Church recognizes that the sin of racism has been destructive to its unity throughout its history. Racism continues to cause painful division and marginalization. The United Methodist Church **shall confront and seek to eliminate racism**, whether in organizations or in individuals, in every facet of its life and in society at large. The United Methodist Church shall work collaboratively with others to address concerns that threaten the cause of racial justice at all times and in all places.” (¶ 5. Article V. Racial Justice, Book of Discipline). We are called to live this out through our [baptismal vows](#): “to resist evil, injustice and oppression, in whatever form they present themselves.” ¶

4. We invite you to describe where the congregation is with regards to racial justice. Check all that apply: ¶

a. → The congregation is on a pathway toward racial justice. ☐ Yes; ☐ No ¶

b. → The pastor preaches on racial justice at least once a month as a part of our spiritual discipline of ¶

.....justice for all God's people. ☐ Yes; ☐ No ¶

c. → There are monthly opportunities for dialogue and learning. ☐ Yes; ☐ No ¶

d. → Leadership is having conversations in hopes of being able to meaningfully sign the ¶

.....antiracism commitment form. ☐ Yes; ☐ No ¶

e. → The congregation has made a formal commitment to antiracism. ☐ Yes; ☐ No ¶

f. → The congregation is engaged in all dimensions specified in the antiracism commitment framework. ☐ Yes; ..

☐ No ¶

g. → The congregation has been on a journey toward racial justice for a long time. ☐ Yes; ☐ No ¶

h. → The congregation is in agreement that we should be working toward racial justice. ↵

.....☐ Yes; ☐ No ¶

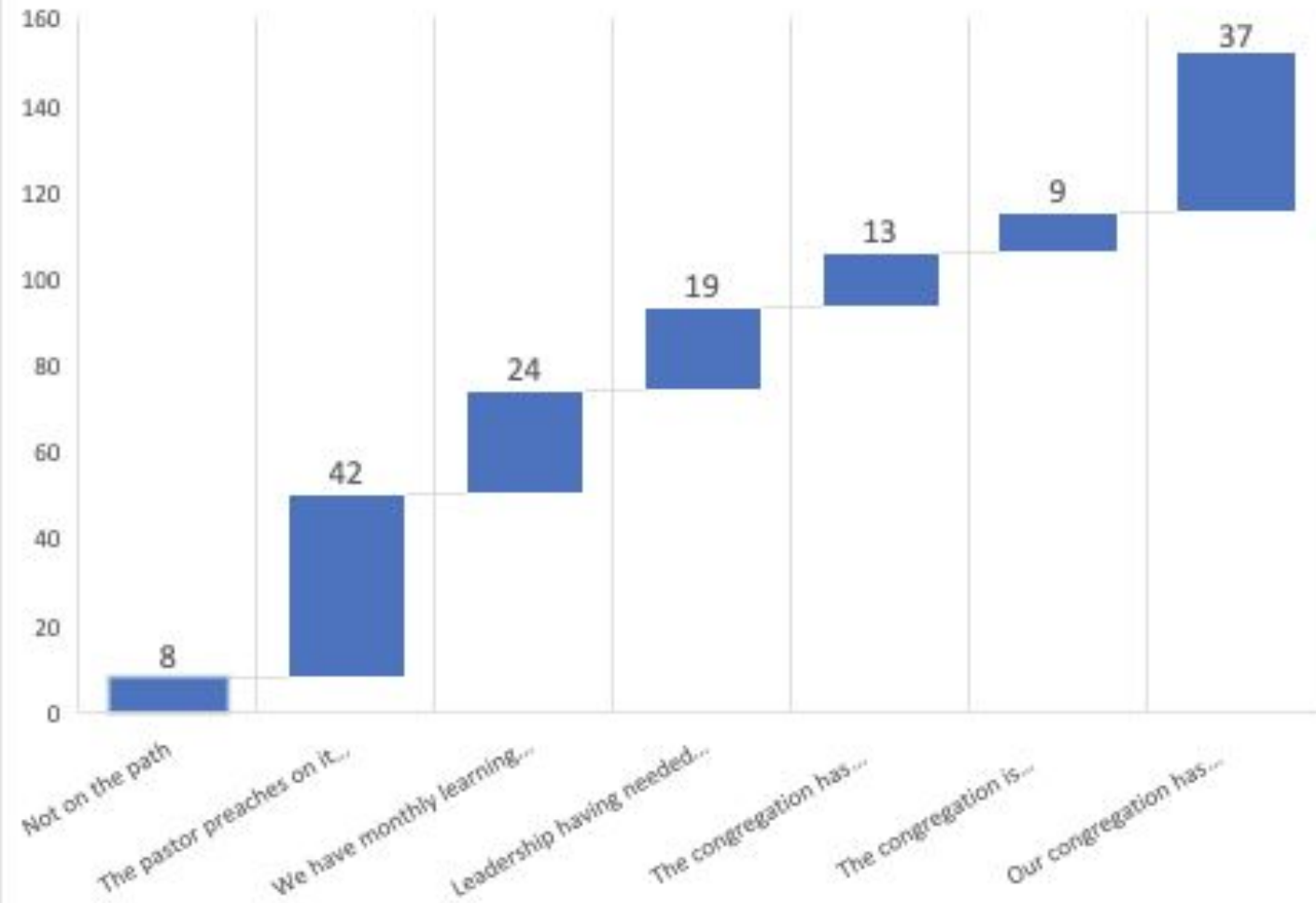
a. → If you answered "No" to items A or H, how is this congregation furthering antiracism based on Article 5 of our United Methodist Constitution. ↵

Click or tap here to enter text. ¶

15. We invite you to tell us where your congregation is in regards to racial justice.

	AN	BM	BS	CH	CM	FR	GW	WE	Grand Total	%
Leadership is having needed conversations in hopes of being able to meaningfully sign the commitment form.	13	8	12	15	15	19	9	14	105	21%
Our congregation has been on a journey of racial justice for a long time. We are still doing the work.	22	24	31	24	35	32	21	16	205	41%
The congregation has signed the commitment form.	8	12	13	9	8	8	6	8	72	14%
The congregation is engaged in all dimensions specified in the commitment form.	9	6	8	6	11	6	1	4	51	10%
The congregation is not of one mind.	17	22	11	18	14	14	9	6	111	22%
The congregation is not on a pathway toward becoming an anti-racist church.	5	4	7	3	8	2	7	3	39	8%
The pastor preaches on racial justice at least once a month as a part of our spiritual discipline of justice for all God's people.	28	30	37	26	26	35	32	22	236	47%
There are monthly opportunities for dialogue and learning.	15	17	22	13	23	18	15	12	135	27%
Grand Total	117	123	141	114	140	134	100	85	954	

Pathway to Becoming Racial Justice Change Agents



92% of BWC congregations who answered this question on the Church Profile are on a path toward racial justice.

58 people didn't answer it. From this, we might understand 83% of BWC congregations are on a path toward racial justice.

Inclusion, Diversity and Equity:

Question 5

Diversity is about representation. Diversity can be measured through numbers and tracked by nationality, for example through nationality, race, gender identity, sexual identity, age, education, economic status. In other words, we are a diverse group because, "You have been invited to the party!"



Inclusion is about participation and is most often measured by actions and perceptions and is usually achieved when diverse groups of people are involved in decision making that impacts the practices and policies of an organization. In other words, "You are invited to plan the party and are an active participant!"



Equity is about fairness and especially fairness in how procedures and processes are determined and enacted. Equity exists when disparities in the outcomes experienced by historically under-represented populations have been eliminated. Equity means, "You can contribute to defining what is included in planning the party and you have the authority to influence and invite people to the party. You have power."

Inclusion, Diversity and Equity:

Question 5

- a. → Our congregation is shaped by the community in all of its dimensions of diversity (age, color, disability, economic condition, ethnicity, gender identity and expression, immigration status, intellectual differences, national origin, racial identity, and sexual orientation). ☐ Yes; ☐ No
- b. → Young people have leadership positions and voice as well as others. ☐ Yes; ☐ No
- c. → Our church building is accessible to people of a variety of physical abilities. ☐ Yes; ☐ No
- d. → We are working with participants, members and persons who use the space to create accommodations that enable them to fully engage in the life of the congregation. ☐ Yes; ☐ No
- e. → If we have different languages and/or nations represented in our congregation we find ways to incorporate all participant's cultures into our common, collective culture. ☐ Yes; ☐ No
- f. → What ministries and accommodations do you offer so that it reflects an increased diversity of people in the community and congregation?

Click or tap here to enter text.

Stewardship of Resources

■ Stewardship of Resources ¶

God calls us to be good stewards of all we are given – creation, relationships, our bodies, our talents, money and other material gifts of all sorts. There are times when district and regional partners ask us to identify churches who can meet community needs. At other times, grants and other funding opportunities are available for churches who meet specific criteria. Responses in this section will help regional and district teams partner with the congregation for the flourishing of the community. ¶

Community Connections: Q 6-8

6. Name of the County or Ward in which this church building is located:¶

Click or tap here to enter text.¶



7. Name any community leaders or entities within the County or Ward that the church is deeply engaged with:

Click or tap here to enter text.¶



8. Please share ways this congregation participates in community association meetings and the planning/coordination of community events toward the common good in the past two years:↵

Click or tap here to enter text.¶



What if you already had
all that you needed,
to do the ministry God is
calling you to do?

Asset Mapping: Questions 9-18

9. Does the church have a working commercial kitchen. ☐ Yes; ☐ No ¶

a. → Is this fully utilized for the good of the community? ☐ Yes; ☐ No ¶

b. → What are your God-given dreams for this resource or physical asset? ↵

Click or tap here to enter text. ¶



10. Does the church offer transportation Services (Church bus or van)? ☐ Yes; ☐ No ¶

a. → Describe the type of vehicle: ☐ Car; ☐ Van; ☐ Bus ¶

b. → Vehicle Make: Click or tap here to enter text. ¶

c. → Vehicle Model: Click or tap here to enter text. ¶

d. → Vehicle Year: Click or tap here to enter text. ¶

e. → How many seats Click or tap here to enter text. ¶

f. → Accessibility features Click or tap here to enter text. ¶

g. → What are your God-given dreams for this asset? Click or tap here to enter text. ¶

Asset Mapping: Questions 9-18

11. Are your facilities fully handicap accessible? ¶

a. → Into the building ☐ Yes; ☐ No ¶

b. → Within the building ☐ Yes; ☐ No ¶

c. → Within each room in the building ☐ Yes; ☐ No ¶

d. → Outdoor spaces ☐ Yes; ☐ No ¶



12. Does the congregation have reliable, high speed WIFI? ☐ Yes; ☐ No ¶



13. What is the sanctuary seating capacity? ¶

a. In pews Click or tap here to enter text. ¶

b. In chairs Click or tap here to enter text. ¶

Asset Mapping: Questions 9-18

14. Does the church have a fellowship hall? ☐ Yes; ☐ No ¶

a. What is the seating capacity? Click or tap here to enter text. ¶

b. What are your God-given dreams for this resource? ↵

....Click or tap here to enter text. ¶

¶

15. Does the church have a gymnasium? ☐ Yes; ☐ No ¶

a. → What size is the gymnasium? ☐ Full court; ☐ Half court ¶

b. → Does the gymnasium have locker rooms with showers? ☐ Yes; ☐ No ¶

¶

16. Does the church have a parking lot? ☐ Yes; ☐ No ¶

a. → If yes, what is the square footage? Click or tap here to enter text. ¶

b. → How many parking spaces do you have? Click or tap here to enter text. ¶

Asset Mapping: Questions 9-18

¶

17. Does the church have a parsonage? ☐ Yes; ☐ No ¶

a. → Is the pastor living in it? ☐ Yes; ☐ No ¶

b. → What is the total square footage of the parsonage. Click or tap here to enter text. ¶

c. → How many rooms in the parsonage could house persons? Click or tap here to enter text. ¶

¶

18a. Does the church have an amphitheater? ☐ Yes; ☐ No ¶

18b. Does the church have a Pavilion? ☐ Yes; ☐ No ¶

18c. Describe any other outdoor structures that could be used for ministry. Click or tap here to enter text. ¶

Young People: Questions 19-21

19. Does the church have a Summer Camp for children and/or youth? ☐ Yes; ☐ No

a. → We host the ministry at our church. ☐ Yes; ☐ No

b. → What accommodations do you make to ensure accessibility

Click or tap here to enter text.

c. → We lead/participate at another BWC site: ☐ Yes; ☐ No

a. → BWC site where we lead/participate. Click or tap here to enter text.

d. → We send our campers to a BWC site? ☐ Yes; ☐ No

a. → BWC site where we send our campers. Click or tap here to enter text.

e. → Our pastor volunteers at a BWC site. ☐ Yes; ☐ No

a. → BWC site where pastor volunteers. Click or tap here to enter text.

f. → Other type of Summer Camp ministry not described above. Click or tap here to enter text.

g. → After-school programs. Click or tap here to enter text.

h. → Before and after school care. Click or tap here to enter text.

i. → Pre-school. Click or tap here to enter text.

j. → Surrounding Community-focused VBS Click or tap here to enter text.

Young People: Questions 19-21

20. Approximately how many 12-18 year old's are involved in the life of the congregation? ¶

☐ 0 youth ¶

☐ 1-4 youth ¶

☐ 5-14 youth ¶

☐ 15-29 youth ¶

☐ 30-49 youth ¶

☐ 50-99 youth ¶

☐ 100-149 youth ¶

☐ 150-199 youth ¶

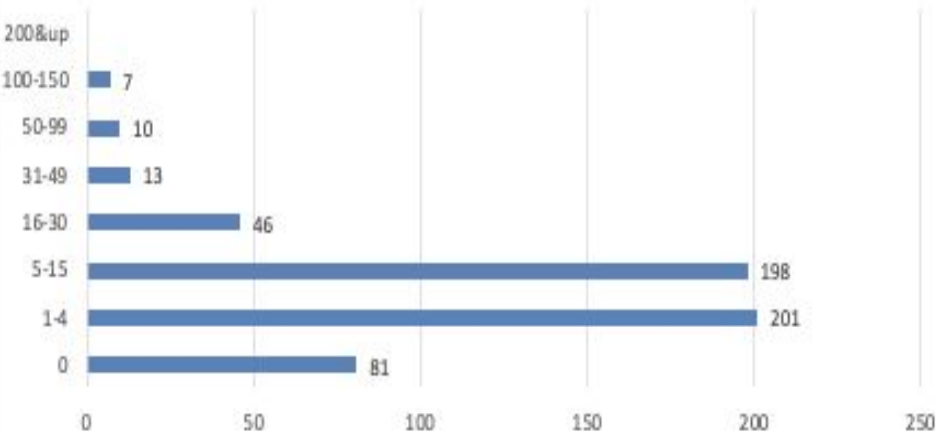
☐ 200 & up ¶

¶

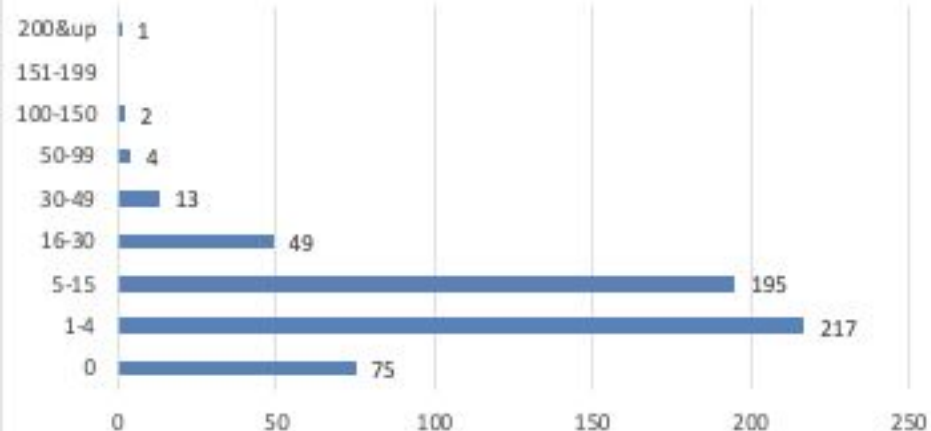
21. Approximately how many 19-30 year old's are involved in the life of the congregation. ¶

Q10-11: YPM Board

Q10: Approximately how many 12-18 year olds are involved in the life of your congregation?



Q11: Approximately how many 19-30 year olds are involved in the life of your congregation?



Outward Facing Ministry: Questions 22-28

22. Does the church provide ministries for people who are unhoused? ☐ Yes; ☐ No

a. → Please describe this ministry in 100 words or less: ↵

Click or tap here to enter text.

b. → Approximately how many people do you serve each month? ↵

Click or tap here to enter text.

c. → Approximately how many of these people are active in the church due to this ministry? Click or tap here to enter text.

23. Does the church provide ministries for immigration advocacy and support? ☐ Yes; ☐ No

24. Does the church provide ministries with Domestic/Intimate Partner Violence? ☐ Yes; ☐ No

25. Does the church provide Feeding ministries? ☐ Yes; ☐ No

Outward Facing Ministry: Questions 22-28

26. Please share any other specialized ministries your congregation has developed to meet any other recurrent, chronic or emergent need in your community. ↵

Click or tap here to enter text. ¶



27. Please name any other partners you work with on a consistent basis that you haven't already mention in questions 23-25 (e.g., businesses, schools, law enforcement, city/county government, ecumenical or interfaith partnerships, other UM congregations, etc.)? ↵

Click or tap here to enter text. ¶



28. If your congregation ceased to exist, what would the community miss? ↵

Click or tap here to enter text. ¶

Ministry Contacts

29. Provide the best point of contact (name, phone, email) for teams or committees related to Young People's Ministry (e.g., Preschool, Childcare, Children, Scouting, Youth, Camping, Campus, Young Adult). If your congregation has a team dedicated to any of the components listed above, please include the contact information for that person as well. ¶

- a. → Name: Click or tap here to enter text. ¶
- b. → Phone: Click or tap here to enter text. ¶
- c. → Email: Click or tap here to enter text. ¶

¶
30. Provide the best point of contact (name, phone, email) for teams or committees related to Wellness Ministry. ¶

- a. → Name: Click or tap here to enter text. ¶
- b. → Phone: Click or tap here to enter text. ¶
- c. → Email: Click or tap here to enter text. ¶

¶

The Form Allows Multiple People and Aspects

- 29.** Provide the best point of contact (name, phone, email) for teams or committees related to Young People's Ministry (e.g., Preschool, Childcare, Children, Scouting, Youth, Camping, Campus, Young Adult). If your congregation has a team dedicated to any of the components listed above please include the contact information for that person as well.

29a. Name(s)

For multiple people, use format "John Smith (position), Jane Doe (position)..."

29b. Phone(s)

For multiple people, use format "### (John Cell), ### (Jane Cell) ..."

29c. Email(s)

For multiple people, use format "email@site.com (John), email@site.com (Jane) ..."

Ministry Contacts



31. Provide the best point of contact (name, phone, email) for teams or committees related to Missions (VIM, ERT, global ministry, etc.).

- a. → Name: Click or tap here to enter text.
- b. → Phone: Click or tap here to enter text.
- c. → Email: Click or tap here to enter text.



32. Provide the best point of contact for teams or committees related to Advocacy and Action ministry (e.g., community organizing, racial justice, disability ministry, gender equity, gun violence prevention, immigration rights, interfaith issues, legislative, multicultural ministries, wealth equity, etc.). If your congregation has a team dedicated to any of the components listed above, please include the contact information for that person as well.

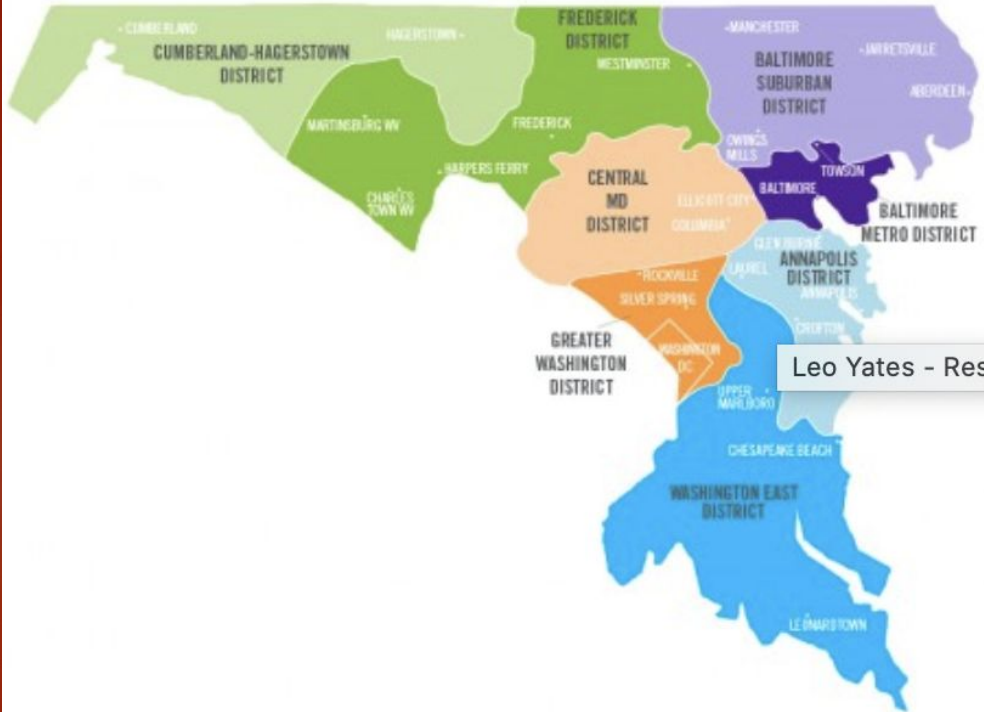
- a. → Name: Click or tap here to enter text.
- b. → Phone: Click or tap here to enter text.
- c. → Email: Click or tap here to enter text.





How Will the Information be Used

DISTRICTS OF THE BALTIMORE-WASHINGTON CONFERENCE



1. Create District and Regional Mission Strategy

#WEAREONE



2. Identify Any
Trends and
Opportunities
for Greater
Community
Impact

#WEAREONE



3. Build a
Shared,
Systemic
Understanding
of Ministry
Vitality

#WEAREONE



Suggestions for Completing It