

BASIC SAFETY GUIDELINES



**STAY HOME &
STAY SAFE**



**PUT ON
FACE MASKS**



**WASH YOUR HANDS
OFTEN WITH SOAP
& RUNNING WATER**



**COVER COUGHS &
SNEEZES PROPERLY**



**ALWAYS SANITIZE
YOUR HANDS**

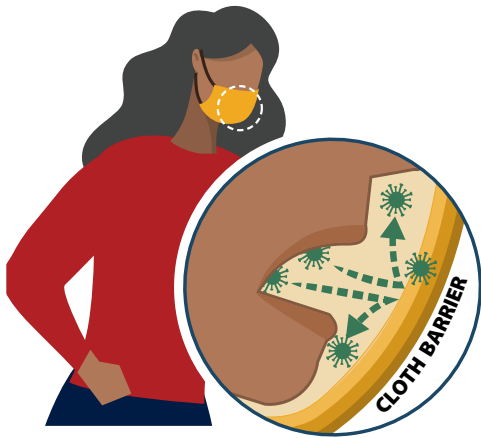


**MAINTAIN
SOCIAL DISTANCE**

HOW TO WEAR A MASK

WEAR YOUR FACE COVERING CORRECTLY

- Wash your hands before putting on your face covering
- Put it over your nose and mouth and secure it under your chin
- Try to fit it snugly against the sides of your face
- Make sure you can breathe easily
- Do not place a mask on a child younger than 2

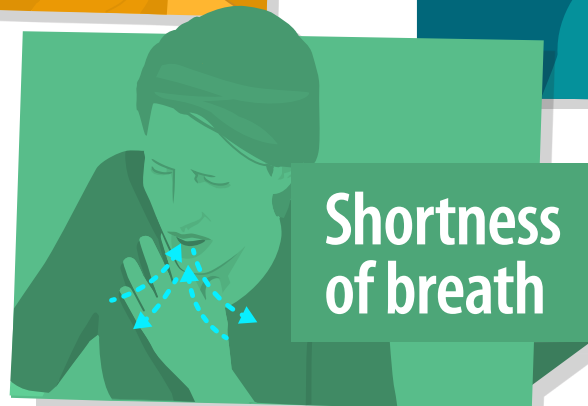


USE THE FACE COVERING TO PROTECT OTHERS

- Wear a face covering to protect others in case you're infected but don't have symptoms
- Keep the covering on your face the entire time you're in public
- Don't put the covering around your neck or up on your forehead
- Don't touch the face covering, and, if you do, clean your hands

Please read before entering.

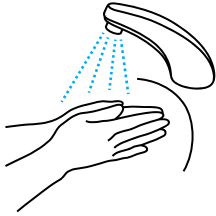
IF YOU HAVE



We respectfully ask, out of an abundance of caution, for you **NOT** to join us today for in-person worship. Thank you for helping us keep our church safe for everyone.

HAND WASHING

Follow these five steps every time:



WET

your hands with clean, running water (warm or cold), turn off the tap, and apply soap.



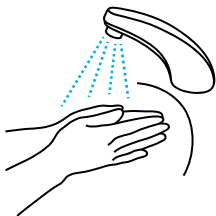
LATHER

your hands by rubbing them together with the soap. Lather the backs of your hands, between your fingers, and under your nails.



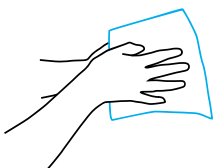
SCRUB

your hands for at least 20 seconds. *Need a timer? Hum the “Happy Birthday” song from beginning to end twice.*



RINSE

your hands well under clean, running water.



DRY

your hands using a clean towel or air dry them.

NO SUNDAY SCHOOL / CHILDREN'S CHURCH



We're sorry, but at this time, no Sunday School nor Children's Church will be offered. Children are welcome to sit with their families in worship.