

# FAITH BASED RESOURCES



**Baltimore-Washington Conference**  
The United Methodist Church



# Faith Based Community Resource Page

- Goal of page is empowering the user to build a facility security program
  - Describes a simple process to work through a risk reduction process
  - Brief explanation of how to use the available resources
  - Focus areas for the “process”
  - Contains the building blocks for a facility or community risk reduction program
  - Continually updated to reflect new resources or guidance

<https://www.cisa.gov/faith-based-organizations-houses-worship>



# Using Faith-Based Four-Step Process...



**STEP 1**  
Start the  
Process



**STEP 2**  
Conduct  
Assessment



**STEP 3**  
Implement Security  
Improvements



**STEP 4**  
Test Your  
Improvements



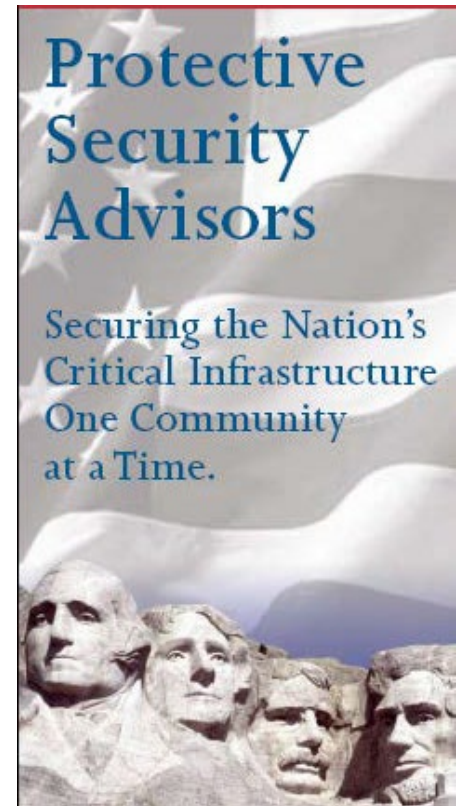
# Step 1...



# DHS / CISA & Local First Responders

Assistance with:

- **Connecting you with your state & local partners**
  - Resources
  - Threat information
- **Assessing vulnerabilities**
- **Exercises**
- **Training**
  - Run Hide Fight
  - Recognizing suspicious activity
  - Bombing Prevention



# Houses of Worship Security Guide



## Goals

Conduct original research to analyze incidents of targeted violence against houses of worship between 2009 and 2019

Develop a security framework that can be tailored to houses of worship of all sizes and denominations



## Audience

Houses of worship and faith-based organizations looking to improve security

### Available now:

[cisa.gov/faith-based-organizations-houses-worship](https://cisa.gov/faith-based-organizations-houses-worship)

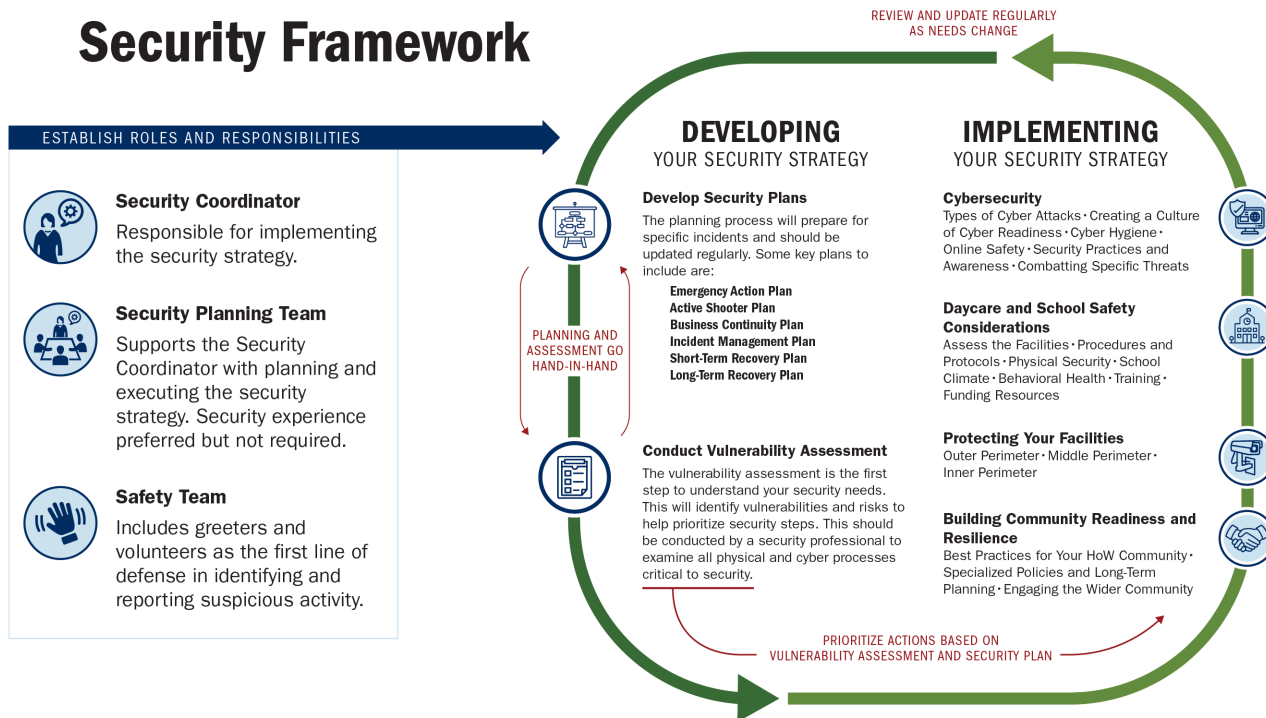


### Guide developed in coordination with:

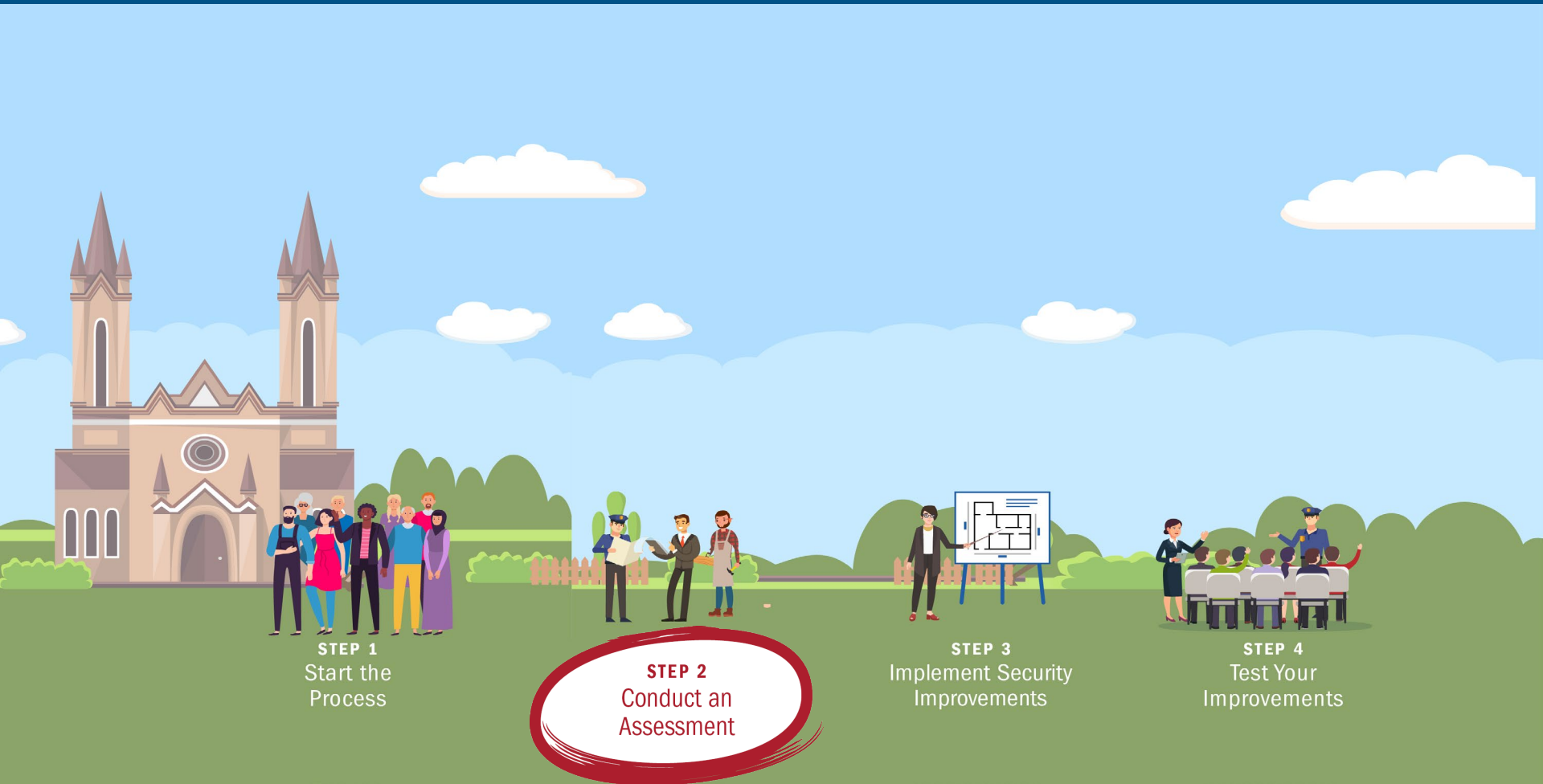
- Federal, state, local, tribal, and territorial partners
- Faith-based organizations
- Subject matter experts in security for houses of worship



# Houses of Worship Security Guide Recommendations



# Step 2...





# CISA SAFE Tool



- In-person assessment of your facility with a custom written report ...
- The Security Assessment at First Entry (SAFE) tool is designed to assess the current security posture and identify options for facility owners and operators to mitigate relevant threats.
- The SAFE tool is suited for all facilities, including houses of worship



# FBO-HOW Security Self-Assessment

## FBO-HOW Security Self-Assessment

The assessment, when completed, will provide an easy to follow road map for implementing suggested voluntary options for consideration. These options are based on current best practices designed to improve facility security and preparedness:

The focus areas of the assessment include the following.



Security and  
Safety/Emergency  
Management



Perimeter Security/  
Delineation



Parking and  
Barriers



Access Control/  
Entry Control



Closed-circuit Video  
(CCV)/ Video  
Surveillance Systems  
(VSS)



# FBO-HOW Security Self-Assessment

- Easy to use
- Designed for the minimally experienced assessor
- Outputs include:
  - ✓ Executive report for use in justifications (Word)
  - ✓ Action Item lists (Word & Excel)
  - ✓ Options for consideration
  - ✓ References

## Houses Of Worship

Save Data Clear all Data

Introduction

Assessment Details

Security / Emergency Management

Security Force

Perimeter Security / Delineation

Parking and Barriers

Access Control / Easy Control

Closed-circuit Video / Video Surveillance Systems

Action Items

*View / Export as csv file*

Create Report

*View / Print Formatted Report*

Questions Only

*View / Print Complete list of Questions Only*

References

## Houses Of Worship Security Self-Assessment Details

When filling out this self-assessment, consider significant areas and assets at the house of worship. Significant areas and assets may be critical components that support the facility's mission or unique elements of the facility. They may represent key vulnerabilities or areas of interest to an attacker. Potential significant areas and assets at a house of worship include the following:

- Sanctuary or Primary Gathering Area: The most sacred part of a house of worship, where congregants gather for worship services, prayer, recitations, and other religious activities. Generally, the most populated area during meeting times, thus often an area for attack by an active shooter.
- Fellowship Hall: Where congregants gather for meals, workshops, and other communal activities. May include a kitchen and eating areas or serve as a gymnasium.
- Financial Office: Where donations are stored during and after meetings. May be targeted for theft.
- Religious Exhibit, Display, Artifact, or Symbol: May be a permanent feature of the facility or temporarily erected for holidays or special events. May be a target for vandalism or theft.
- Facility Vehicles: Usually vans or buses belonging to the house of worship. May be used to transport congregants and visitors to and from the facility as well as offsite activities.

Please Contact CISA at [Central@CISA.GOV](mailto:Central@CISA.GOV) if you have any questions while performing a Houses of Worship Security Self-Assessment

To begin, enter the Facility Name and Date below to start a new self-assessment, or load a previously saved Houses of Worship Security Self-Assessment file to continue working on it. Then click the "Continue with Houses of Worship Security Self-Assessment" button.

Browse to saved data file

Choose File No file chosen

Then click button

Load selected saved data



# FBO-HOW Security Self-Assessment

## THE SELF-ASSESSMENT IN ACTION

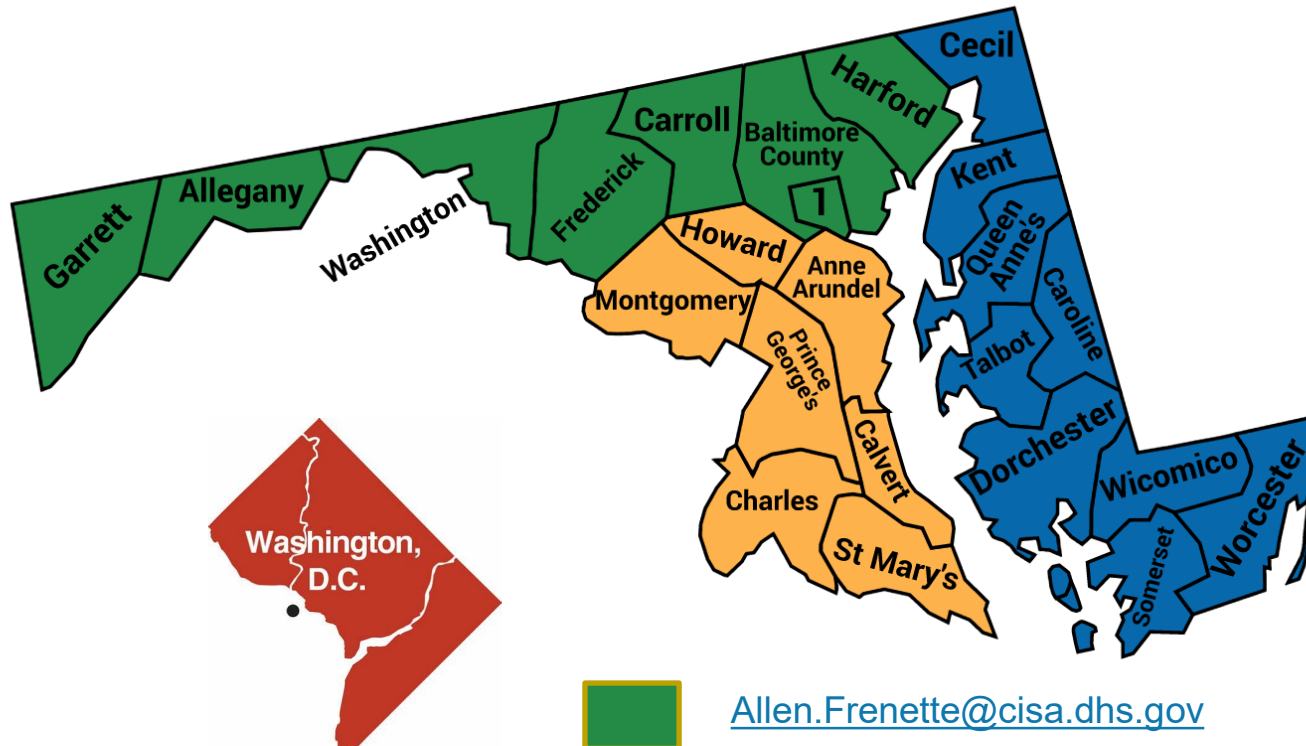
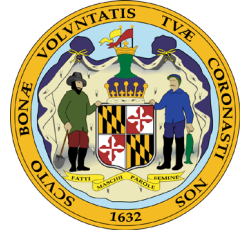
Question	Very Low	Low	Medium	High	Very High
1. Does the house of worship have a security manager or security committee to make security management decisions?	The house of worship does not have a security manager or committee.	The house of worship has a security manager or committee, but security management activities are sporadic.  <div>Your self-identified level of security</div>	The house of worship has a security manager or committee. Security management activities are regularly scheduled, but not coordinated with other committees, departments, or groups (e.g., special events planning, childcare).	The house of worship has a security manager or committee. Security management activities are regularly scheduled and coordinated with other committees, departments, and groups, but additional personnel are needed to support the facility's security mission.	The house of worship has a security manager or committee. Security management activities are regularly scheduled and coordinated with other committees, departments, and groups, and staffing levels fully support the facility's security mission.
Option for Consideration	Very Low	Low	Medium	High	Very High
	Designate an individual as a security manager or a group of individuals as a security committee, and ensure that person or group is responsible for developing, implementing, and coordinating all security-related activities. If the manager or committee members have no security or law enforcement background, make sure they reach out to local law enforcement to become acquainted. Provide security management training and/or access to training materials and resources.	Schedule regular meetings to review security procedures and incidents.  <div>Your starting point for improving security</div>	Coordinate safety and security planning with other committees, departments, and groups.  <div>Continual Improvement Approach</div>	Hire or appoint additional personnel to support the facility's security mission.	Regularly assess the facility's security management program. Conduct security surveys, risk assessments, and threat assessments of the facility and neighboring areas. Implement best practices based on collaborative relationships and new or updated resources.

- **Background:** Security or safety managers (or volunteer security or safety personnel) are responsible for the effective implementation of security/safety policies, programs, directives, and training within their house of worship. Security or safety committees (also known as volunteer security teams or volunteer safety teams or departments) are a group of people working together to fulfill this same purpose. They may include religious leaders, congregants, security professionals, and first responders.
- **References:** (1) ASIS Houses of Worship Committee, *Recommended Best Practices for Securing Houses of Worship Around the World*, 2017, accessed January 13, 2020, [asisonline.org/globalassets/get-involved/councils/documents/best-practices-securing-houses-of-worship.pdf](https://www.asisonline.org/globalassets/get-involved/councils/documents/best-practices-securing-houses-of-worship.pdf) (2) Interagency Security Committee (ISC), *Facility Security Plan: An Interagency Security Committee Guide*, 1st edition, 2015, accessed January 13, 2020, [cisa.gov/publication/isc-facility-security-plan-guide](https://www.cisa.gov/publication/isc-facility-security-plan-guide).
- **For more information:**
  - Cybersecurity and Infrastructure Agency (CISA), "Hometown Security," 2020, accessed April 29, 2020, [cisa.gov/hometown-security](https://www.cisa.gov/hometown-security).
  - State of New Jersey Office of Homeland Security and Preparedness, *Role of Security Coordinators*, undated, accessed January 14, 2020, [static1.squarespace.com/static/54d79f88e4b0db3478a04405/t/5a4d52ee53450af96083504f/1515016942789/Role+of+Security+Coordinators.pdf](https://static1.squarespace.com/static/54d79f88e4b0db3478a04405/t/5a4d52ee53450af96083504f/1515016942789/Role+of+Security+Coordinators.pdf).





## DHS Protective Security Advisors



[Allen.Frenette@cisa.dhs.gov](mailto:Allen.Frenette@cisa.dhs.gov)



[David.Johnston@cisa.dhs.gov](mailto:David.Johnston@cisa.dhs.gov)



[Ken.Greeseon@hq.dhs.gov](mailto:Ken.Greeseon@hq.dhs.gov)



[Daniel.Genua@cisa.dhs.gov](mailto:Daniel.Genua@cisa.dhs.gov)

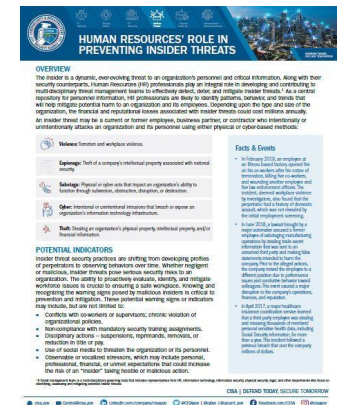
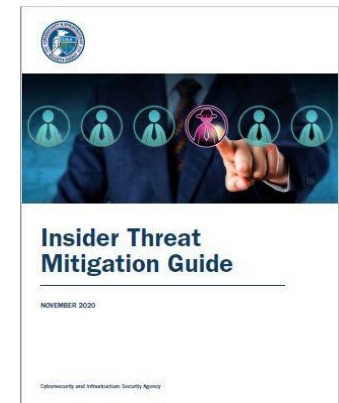
February 22, 2022

# Step 3...



# CISA Resources

- Insider Threat Mitigation
- Active Assailant & Medical Training
- De-Escalation Training





# Best Practice



John Wesley United Methodist Church  
Love God. Love Others. Serve the World.

[About Us](#) ▾ [Worship](#) ▾ [Children & Youth](#) ▾ [Spiritual Growth](#) ▾ [Outreach Ministries](#) ▾ [Newsletter](#)





# John Wesley United Methodist Church



IP Video Door Intercom  
and  
Fob Access Reader  
(Right side of main entrance)

# John Wesley United Methodist Church



Day/Night Indoor/Outdoor  
High-Resolution Camera

(Right side of main entrance)

18



# John Wesley United Methodist Church



Camera in Narthex

(Adjacent to sanctuary entrance)



# John Wesley United Methodist Church



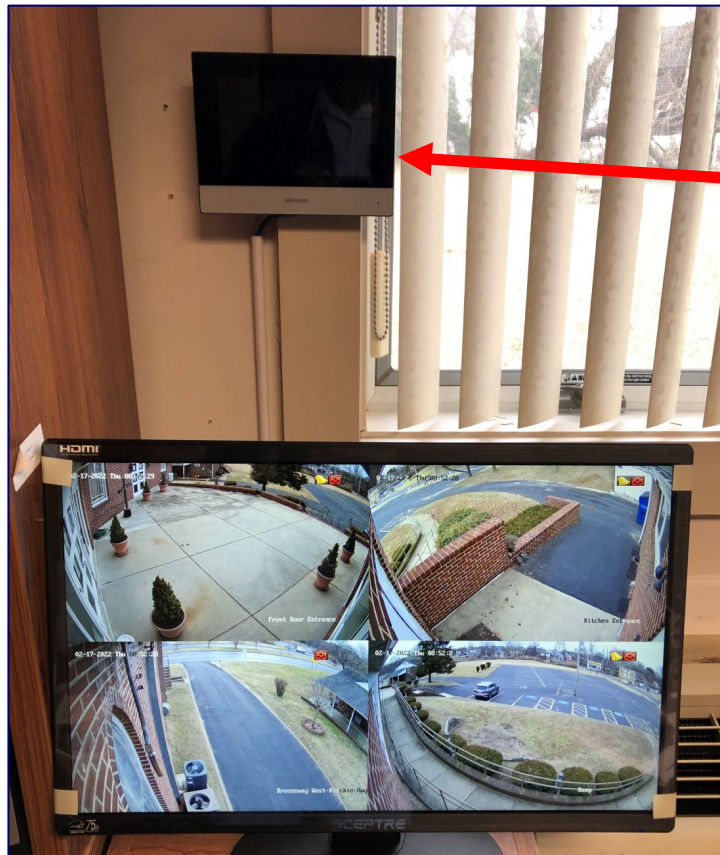
Main Monitor & Answer Station  
(Church conference room)

20





# John Wesley United Methodist Church



Monitor & Answer Station  
(Secretary's office)



# John Wesley United Methodist Church



Digital Quality Ethernet (Cat 5/6+) Cabling  
(Custom installed throughout the Church)



# Step 4...



**STEP 1**  
Start the  
Process



**STEP 2**  
Conduct  
Assessment



**STEP 3**  
Implement Security  
Improvements

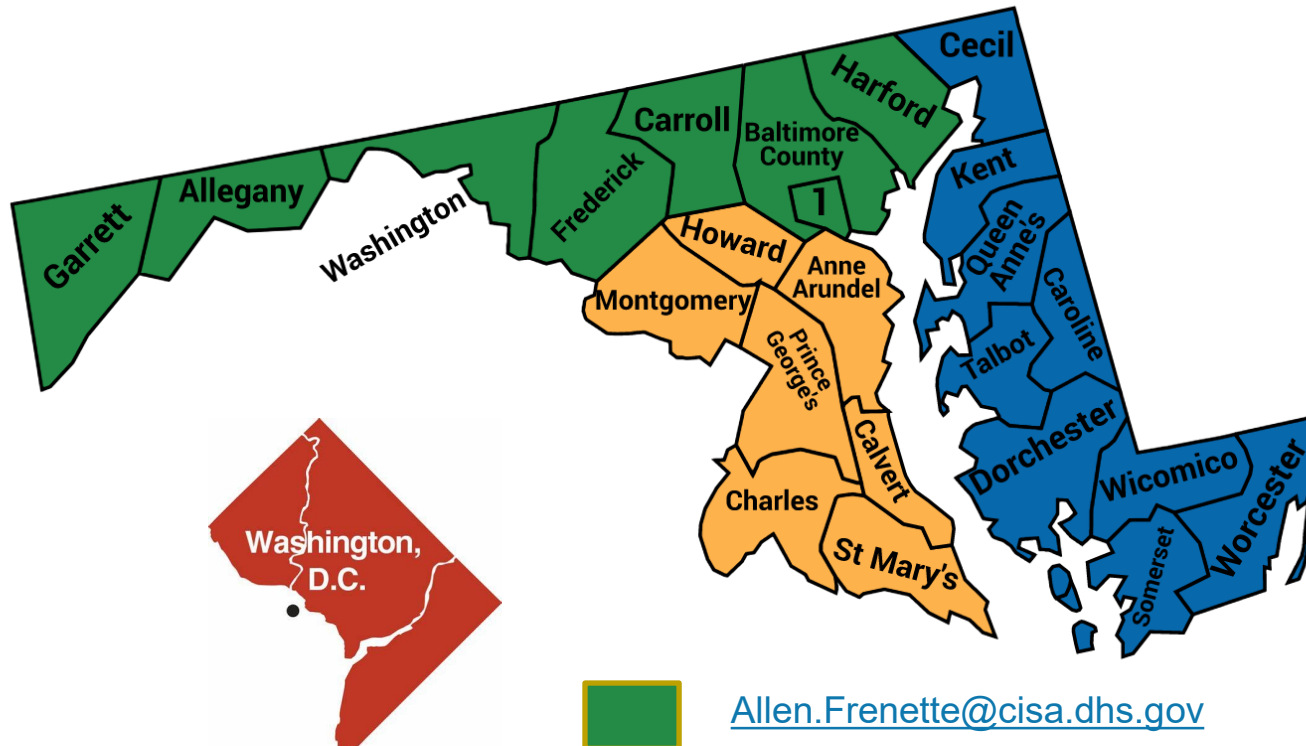
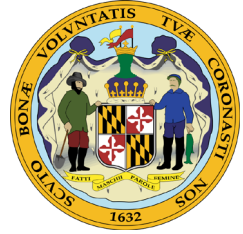


**STEP 4**  
Test your  
Improvements





## DHS Protective Security Advisors



[Allen.Frenette@cisa.dhs.gov](mailto:Allen.Frenette@cisa.dhs.gov)



[David.Johnston@cisa.dhs.gov](mailto:David.Johnston@cisa.dhs.gov)



[Ken.Greeseon@hq.dhs.gov](mailto:Ken.Greeseon@hq.dhs.gov)



[Daniel.Genua@cisa.dhs.gov](mailto:Daniel.Genua@cisa.dhs.gov)

February 22, 2022



# Faith Based Community Resource Page

- Goal of page is empowering the user to build a facility security program
  - Describes a simple process to work through a risk reduction process
  - Brief explanation of how to use the available resources
  - Focus areas for the “process”
  - Contains the building blocks for a facility or community risk reduction program
  - Continually updated to reflect new resources or guidance

<https://www.cisa.gov/faith-based-organizations-houses-worship>



# Nonprofit Security Grant Program

Funding Opportunity



**Maryland**  
DEPARTMENT OF  
EMERGENCY MANAGEMENT

**Larry Hogan** | Governor

**Boyd K. Rutherford** | Lt. Governor

**Russell J. Strickland** | Secretary

**MDEM.MARYLAND.GOV**

# What is NSGP and who is eligible?

- Authorized by Congress and implemented by DHS to help strengthen the nation's communities against potential terrorist attacks. NSGP supports the goal to Strengthen National Preparedness and Resilience.
- A **competitive** grant program intended to provide federal funding for physical enhancement and other security-related activities to nonprofit organizations that are at risk of a terrorist attack.
- *Applicants must be 501(c)(3) nonprofit organizations to be eligible.*



# What Expenditures are eligible under NSGP ?

Specific investments generally fall into one of the following eight allowable expense categories:

1. Construction
2. Equipment
3. Exercises
4. Management & Administration (M&A)
5. Organization
6. Operational Activities
7. Planning
8. Training/Security

# NSGP Timeline

- February/ March - Notice of Funding Opportunity (NOFO) NSGP
- March/ April - Pre-application Webinar hosted by MDEM
- April - Applications due to SAA
  - UASI Region vs. NCR Region vs State applications
  - Applications will be scored based on Scoring Tool
- May - Applications due to DHS/ FEMA
- September 1 - start date (30 month awards)



# NSGP Requirements

- Investment Justification
- Mission Statement
- Vulnerability Assessment



*The mission of the Maryland Department of Emergency Management is to proactively reduce disaster risks and reliably manage consequences through collaborative work with Maryland's communities and partners.*

**Lola Parker**

Lola.Parker2@maryland.gov

(443) 381-3290



Larry Hogan | Governor

Boyd K. Rutherford | Lt. Governor

Russell J. Strickland | Secretary

**MDEM.MARYLAND.GOV**